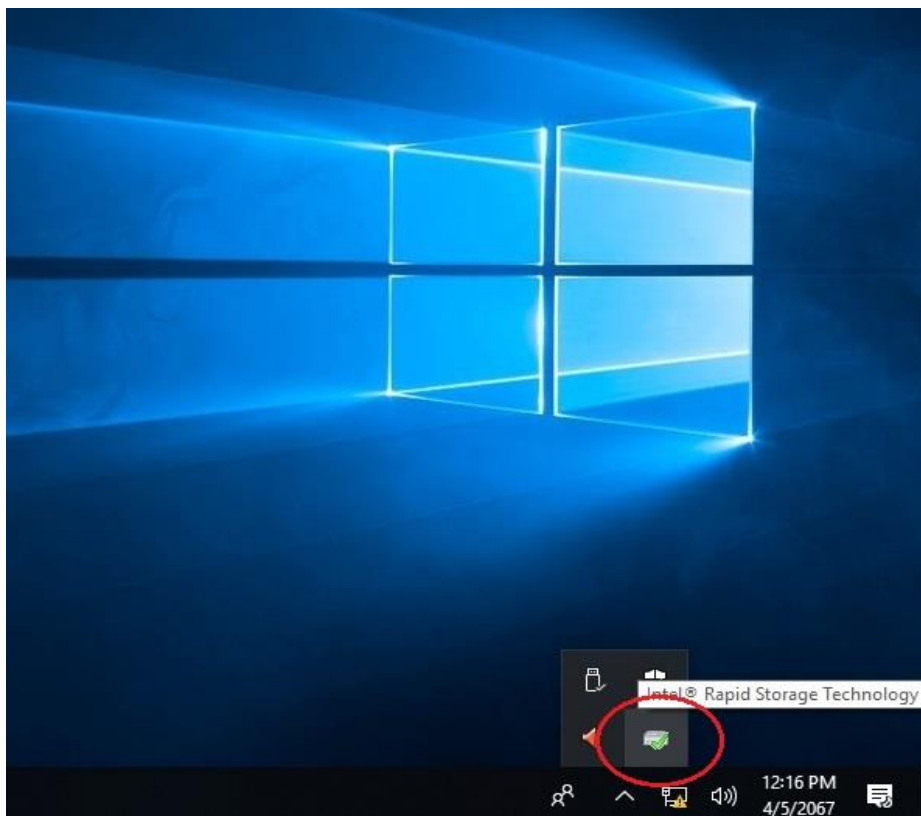


BIOS Set RAID mode or update only RAID BIOS ,Use RAID Image

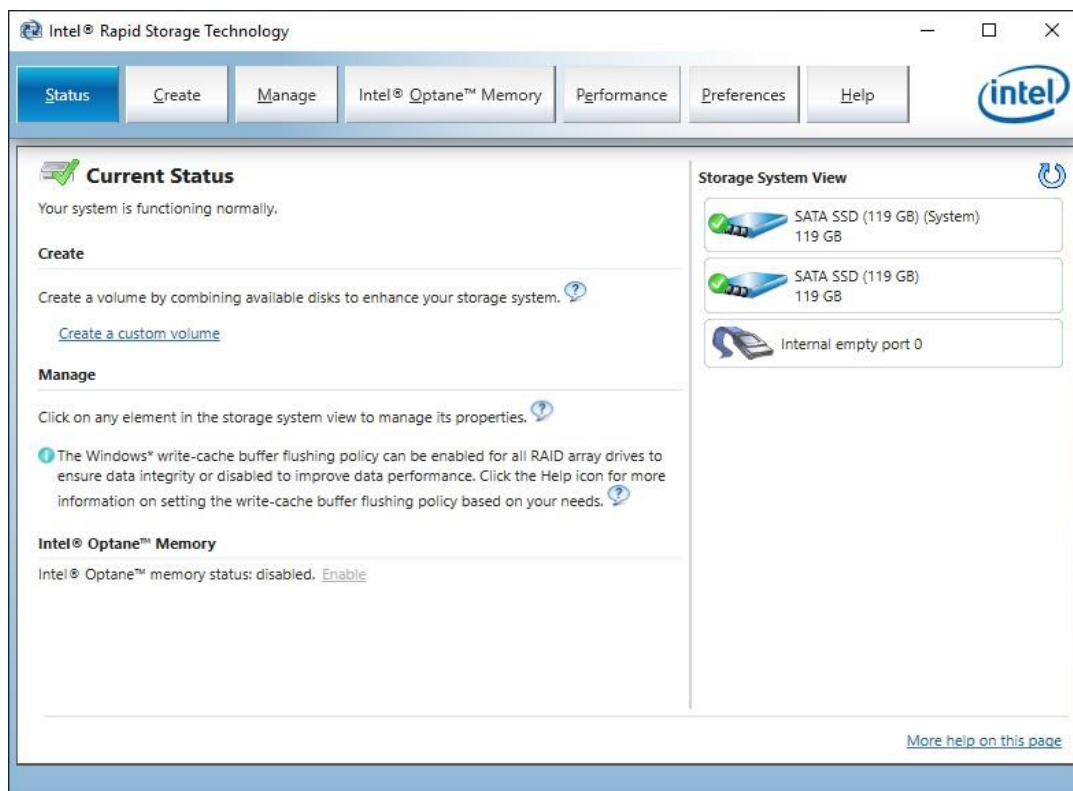
1. Put in M.2



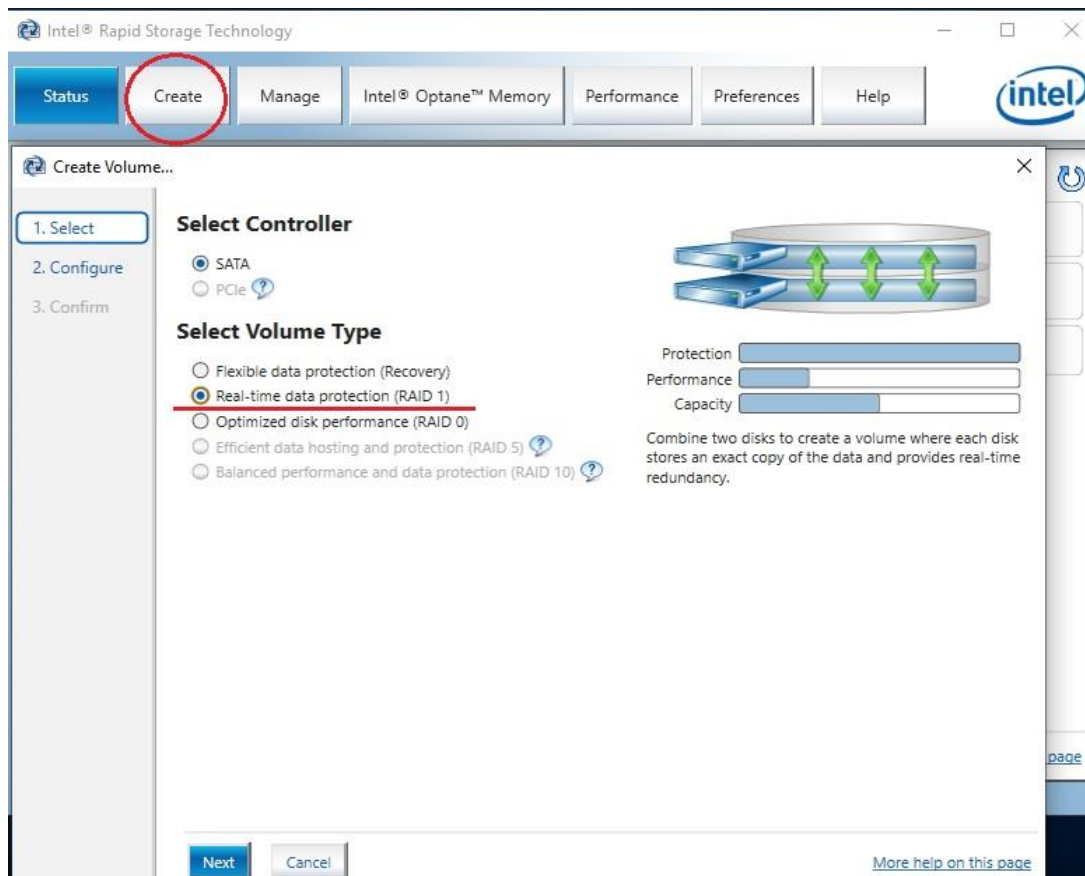
2. Run RAID UI



3. RAID UI



4. Create RAID1



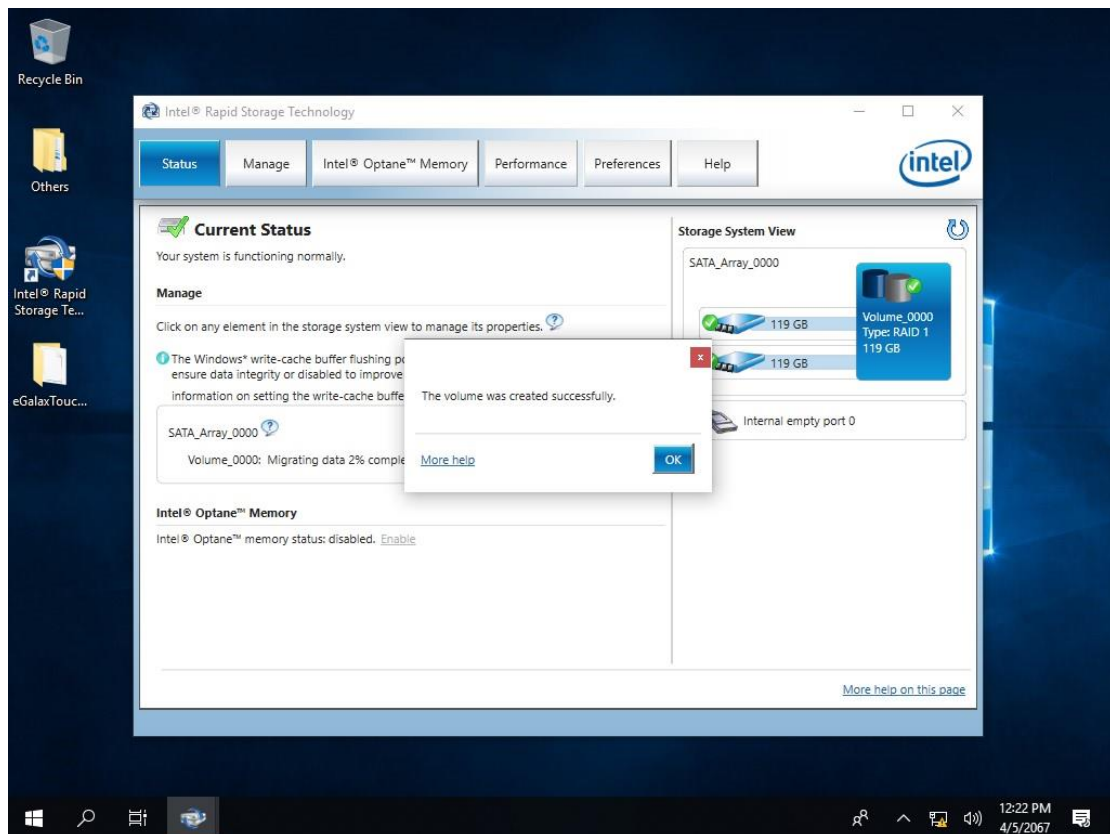
5. Change the name, check the storage device

The screenshot shows the 'Create Volume...' wizard in the 'Configure Volume' step. On the left, a sidebar lists three steps: '1. Select', '2. Configure' (which is highlighted), and '3. Confirm'. The main area is titled 'Configure Volume'. It features a 'Name' field containing 'Volume_0000'. Below this, a section 'Select the array disks (minimum selection required):' contains two checked items: 'SATA SSD on Controller 0, Port 1 (119 GB) (System)' and 'SATA SSD on Controller 0, Port 2 (119 GB)'. A red rectangle highlights these two items. Below the disk selection, a question asks 'Do you want to keep data from one of the selected disks?' with three radio button options: 'No', 'Yes: SATA SSD on Controller 0, Port 1' (which is selected), and 'Yes: SATA SSD on Controller 0, Port 2'. At the bottom of this section, there are tabs for 'Volume Size' and 'Advanced'. The 'Advanced' tab is active, showing 'Volume Size 122,104 MB' and an 'Array allocation' slider set to 100%. At the bottom of the wizard are 'Back', 'Next', and 'Cancel' buttons. On the right side, a 'Proposed Configuration' panel shows 'Array_0000' with two 119 GB disks and a summary box for 'Volume_0000' (Type: RAID 1, 119 GB). A 'More help on this page' link is at the bottom right.

6. Proceed with deleting data

The screenshot shows the 'Create Volume...' wizard in the 'Confirm Volume Creation' step. The sidebar on the left now highlights '3. Confirm'. The main area is titled 'Confirm Volume Creation' and instructs the user to 'Review the selected configuration.' A yellow warning icon is followed by the text: 'WARNING: Completing this action will permanently delete existing data on the following disks. Back up data before continuing.' Below this, it lists '* SATA SSD on Controller 0, Port 2 (119 GB)'. An information icon is followed by the text: 'This process could take a while depending on the number and size of the disks. You can continue using other applications during this time.' At the bottom of this section, the checkbox 'Proceed with deleting data' is checked and circled in red. The 'Proposed Configuration' panel on the right remains the same as in the previous step. At the bottom of the wizard are 'Back', 'Create Volume' (which is highlighted with a red circle), and 'Cancel' buttons. A 'More help on this page' link is at the bottom right.

7. Created successfully



8. RAID is running

