

ILITek iUniTouch Tool

User Guide

Version: V1.06

Release Date: Nov. 22 ,2020

ILI TECHNOLOGY CORP.

10F, No.1, Taiyuan 2nd St., Zhubei City,
Hsinchu County 302, Taiwan
Tel.886-3-5600099; Fax.886-3-5600585
<http://www.ilitek.com/>

Document Revision History

Version	Date	Author	Description
1.00	2016/2/26	Kevin Chang	First Release Version
1.01	2016/6/29	Vincent Chen	Added New Features
1.02	2016/7/7	Kevin Chang	Added New Features
1.03	2016/10/19	Kevin Chang	Added Ubuntu Support
1.04	2016/11/22	Kevin Chang	Correcting Errors in Description
1.05	2020/07/15	Arik Huang	Added New Features
1.06	2020/11/16	Arik Huang	Modified for tool V1.2.3.0
1.07	2021/01/26	Arik Huang	Modified for tool V1.2.4.0

Table of Contents

1	Description	6
1.1	System Requirements.....	6
2	Software Installation	7
2.1	Windows Platform	7
2.2	Linux Platform	10
3	ILITek iUniTouch Tool	11
3.1	TP List Page	11
3.2	Mode Switch.....	14
3.3	Touch Behavior.....	17
3.4	FW Upgrade	18

List of Figures

Figure 2-1: Setup.exe	7
Figure 2-2: Welcome Installation	7
Figure 2-3: Destination Folder	8
Figure 2-4: Installation Progress Window	8
Figure 2-5: Installation finish	9
Figure 2-6: Installation finish	10
Figure 3-1: TP List Page	11
Figure 3-2: Mode Switch	14
Figure 3-3: Touch Behavior	17
Figure 3-4: FW Upgrade	18

List of Tables

Table 3-1: Detailed description of TP List Page12

Table 3-2: Detailed description of Mode Switch.....14

Table 3-3: Detailed description of Touch Behavior17

Table 3-4: Detail description of FW Upgrade.....18

1 Description

ILITEK iUniTouch Tool provides a configuration utility for all kinds of ILITEK capacitive touch IC. This document would help to use ILITEK iUniTouch Tool in detail.

1.1 System Requirements

- ILITEK USB interface capacitive touch related products
- Windows OS: Windows XP SP3, Windows 7, Windows 8/8.1 and Windows 10
- Linux OS: Ubuntu 12.04.5, Ubuntu 14.04.4, Ubuntu 16.04.1

2 Software Installation

2.1 Windows Platform

Double click at the setup.exe file to start software driver installation. The setup program will guide user to complete software installation.



Figure 2-1: Setup.exe

Press **Next** button to continue installation.

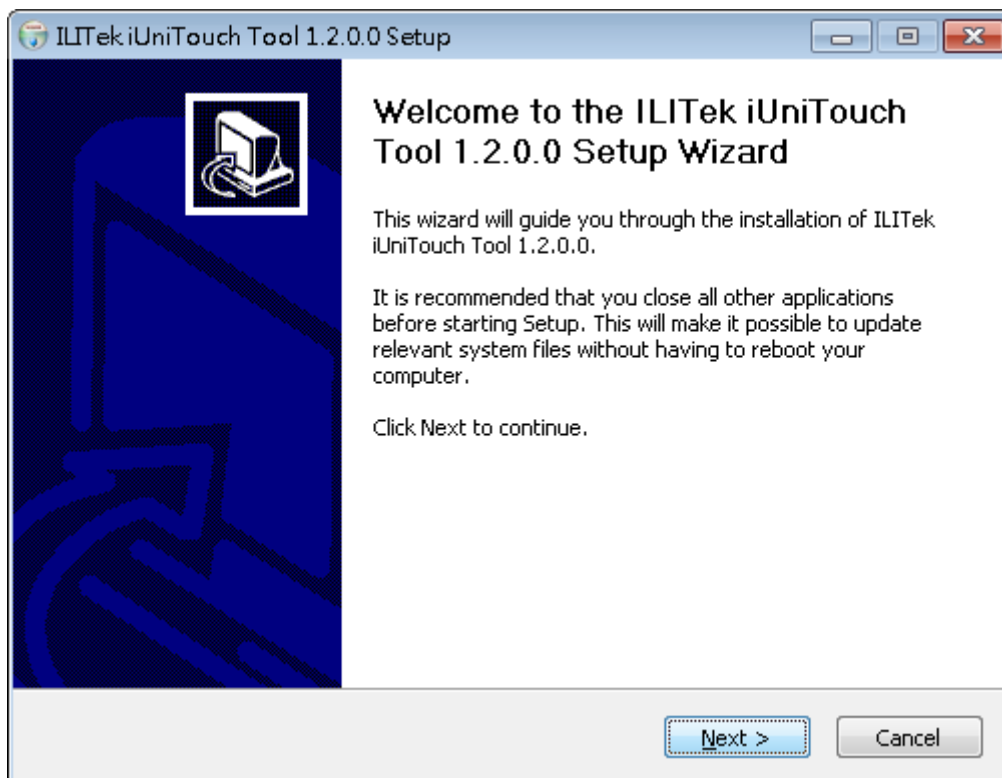


Figure 2-2: Welcome Installation

User can choose the destination folder. Press **Install** to continue.

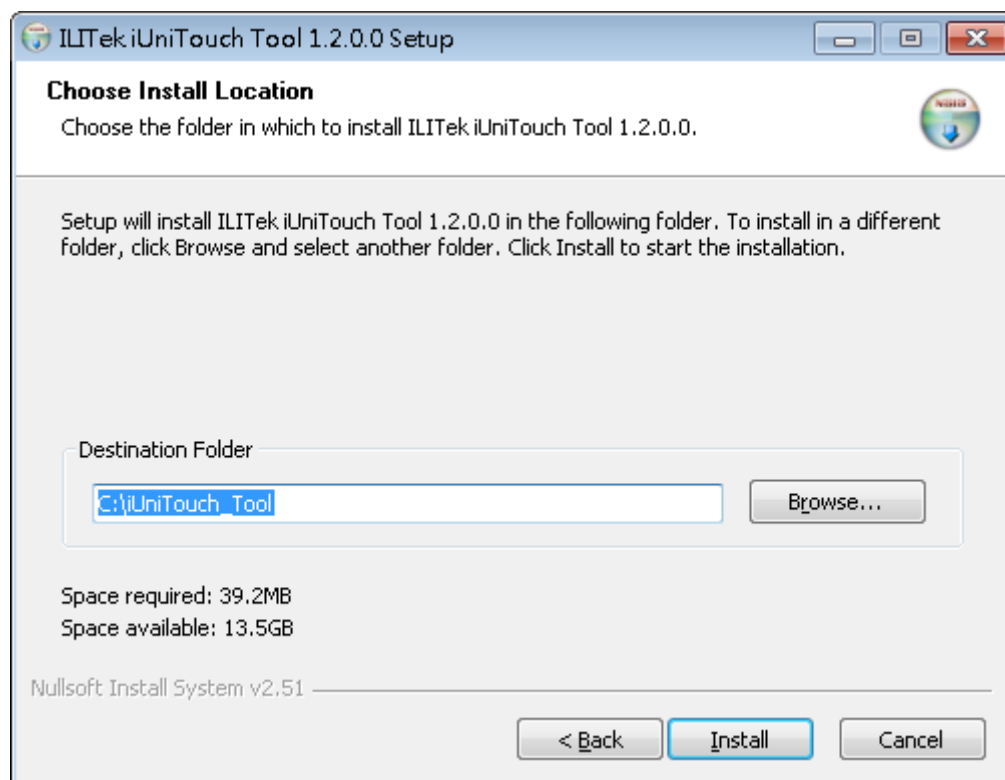


Figure 2-3: Destination Folder

Installation will take a few minute, please wait patiently.

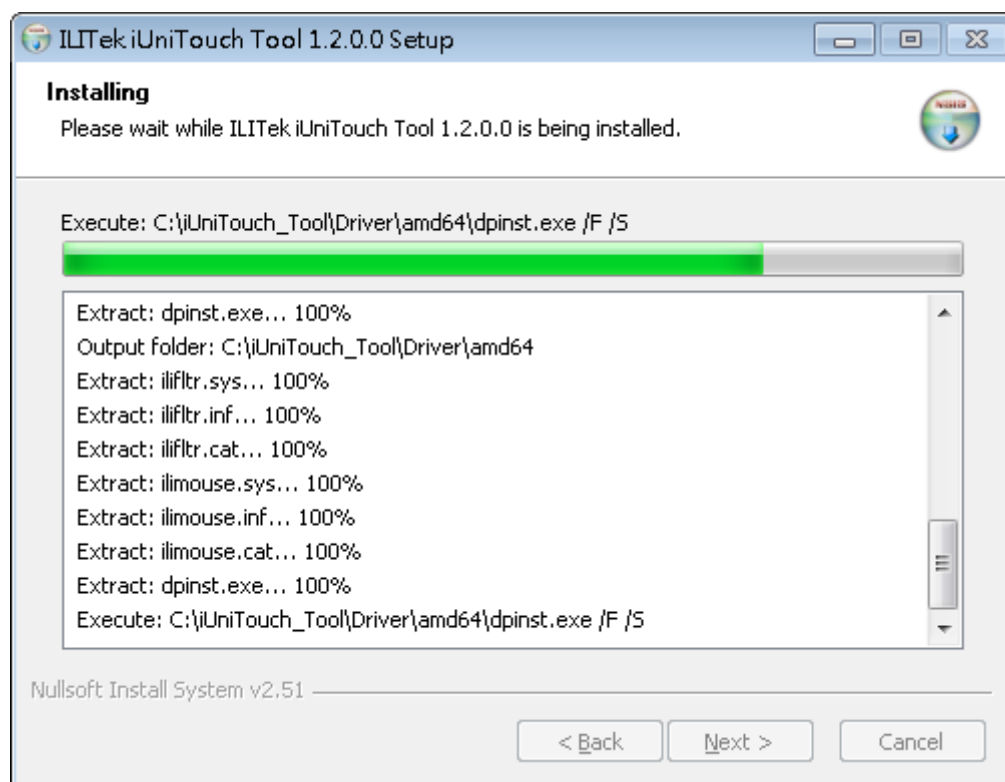


Figure 2-4: Installation Progress Window

The information contained herein is the exclusive property of ILI Technology Corp. and shall not be distributed, reproduced, or disclosed in whole or in part without prior written permission of ILI Technology Corp.

When completed install please reboot your computer to make change take effect.

After reboot, you can see the ILITek iUniTouch Tool shortcut on desktop and start menu.

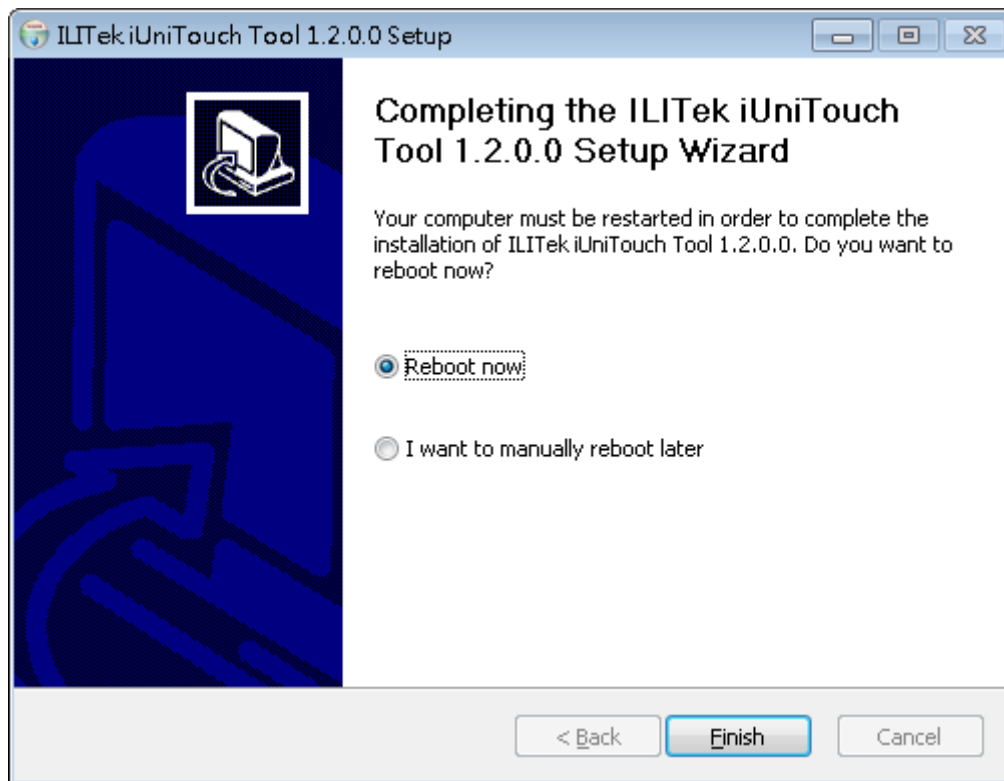


Figure 2-5: Installation finish

2.2 Linux Platform

Extract zip file

Use Ctrl+Alt+T shortcut to open terminal

Enter “sudo ./install.sh” command in extract folder (if you cannot execute shell file, please enter “sudo chmod +x install.sh” modify file permission)

Please reboot machine after installation finish

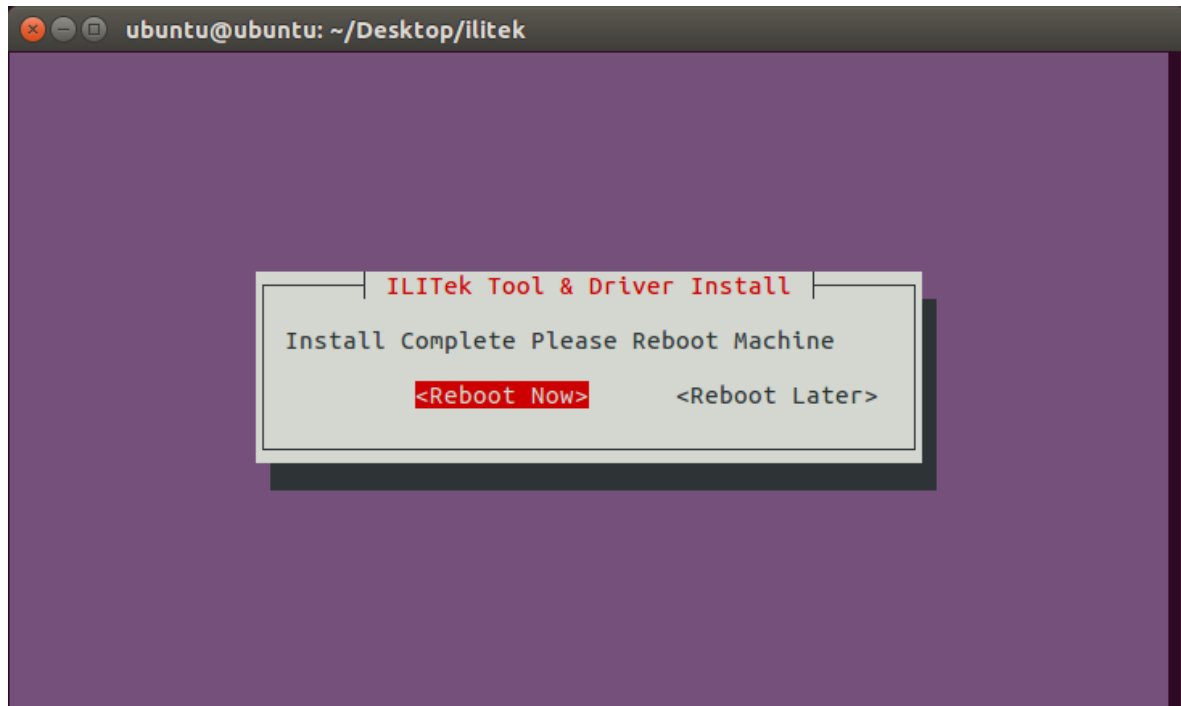


Figure 2-6: Installation finish

Application path is “/etc/ilitek/”, you have to become root before you execute the application

3 ILITek iUniTouch Tool

The following sections describe the tool function. ILITek iUniTouch Tool provide the same user interface on windows and linux. Therefore, the functions will be introduced together.

3.1 TP List Page

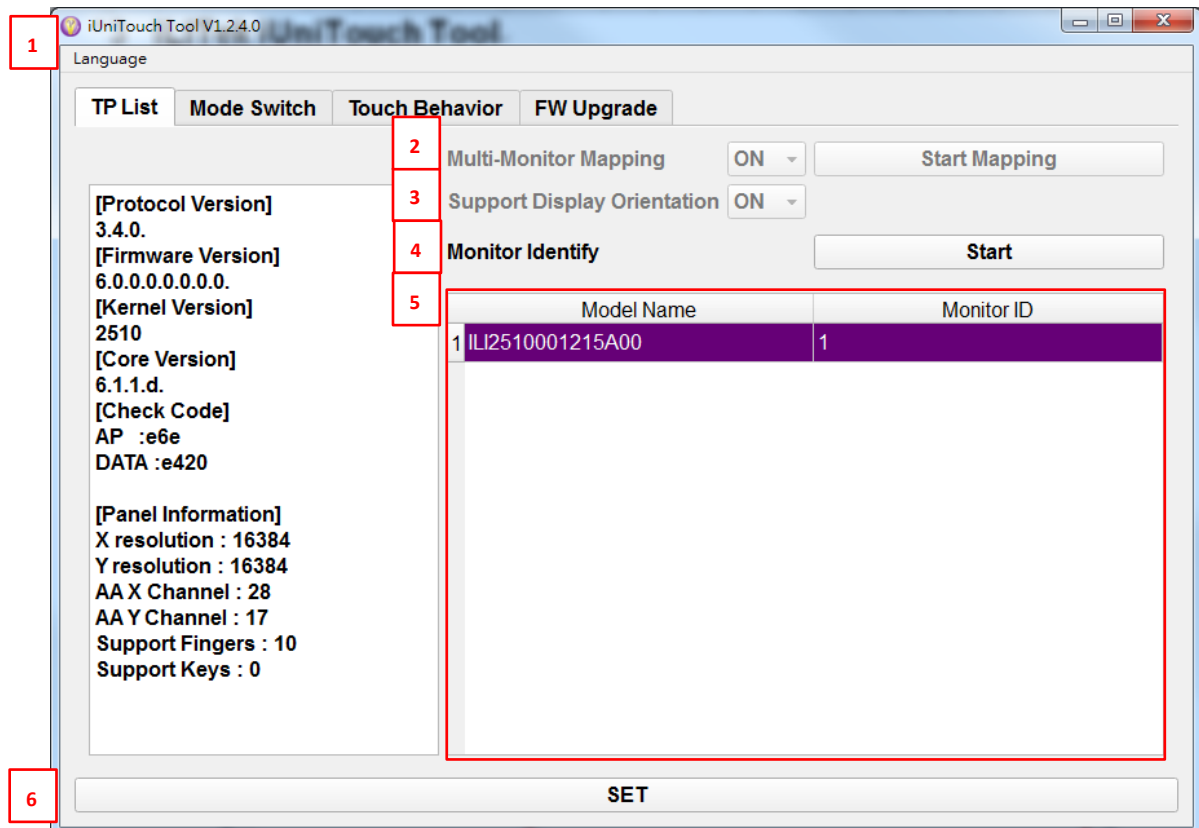




Figure 3-1: TP List Page

Table 3-1: Detailed description of TP List Page

No.	Item	Description
1	Language Setting	The UI language selections provide English, Traditional Chinese and Simplified Chinese.
2	Multi-Monitor Mapping	<p>Monitor mapping switch (for mouse mode only)</p> <p>If user select "ON", and then click "Start Mapping", This function will help user to does monitor mapping. a new window will be popped-up on a monitor as below</p> <ul style="list-style-type: none"> Condition exclusion <p>(a) If you plug / unplug a monitor and your 'touch to mouse' position was incorrect, please remap again to fix it.</p> <p>(b) If you change display settings and your "touch to mouse" position was incorrect, close tool and launch again to fix it.</p> <p>(c) Screen Orientation of both monitor must be the same.</p>  <p>Or</p>  <p>Not support more than 2 monitors.</p>
3	Support Display Orientation	Monitor display orientation support. If user select "ON", this utility will correct the touchscreen orientation to match with monitor display orientation whenever it detects monitor rotation.
4	Monitor Identify	The tool shows the monitor ID on every screens
5	TP List	User can double click to select the TP list in the window to do configuration for it. Also, all of the other property pages will be updated for this selected TP.
6	SET Button	Make change take effect.

Tap this screen with your finger to set it as the Tablet PC screen.
If this is not Tablet PC screen. Press Enter to move to next screen. Press Esc to exit.

It will move to next screen in 10 seconds.

3.2 Mode Switch

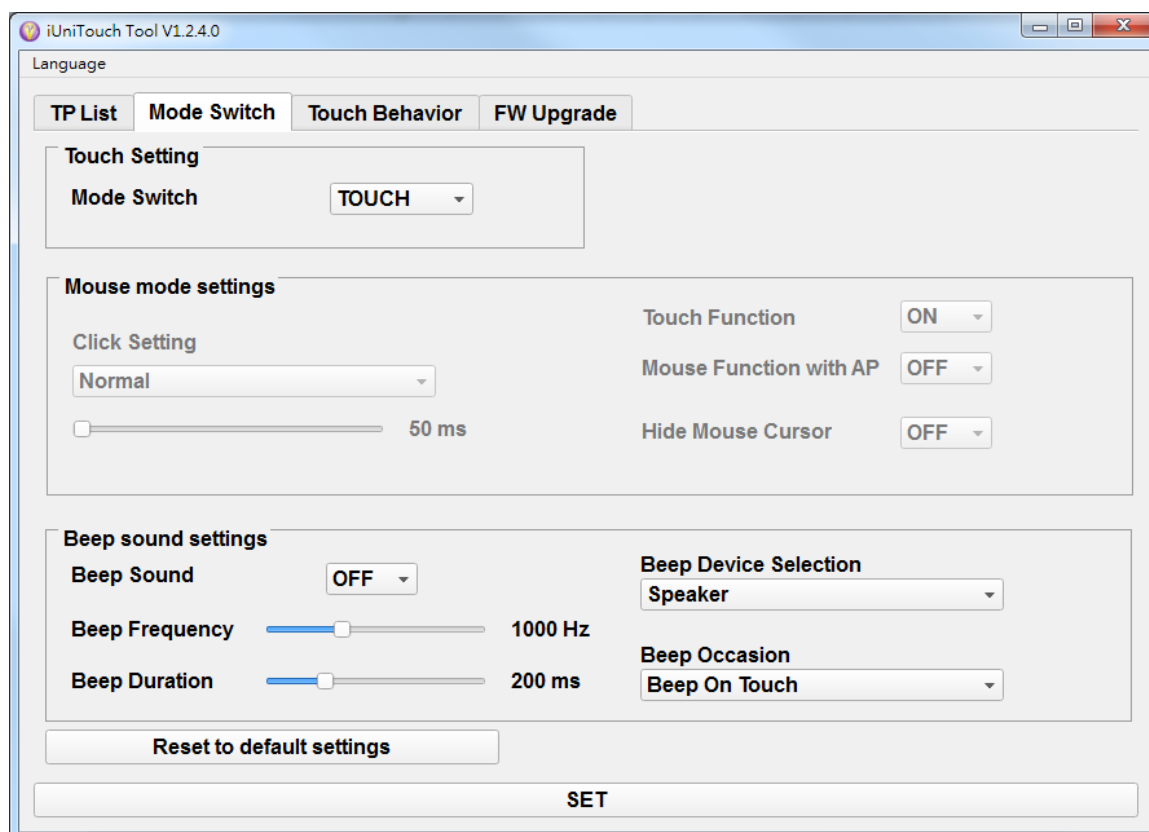


Figure 3-2: Mode Switch

Table 3-2: Detailed description of Mode Switch

No.	Item	Description
1	Mode Switch	If user select "MOUSE" TP will become mouse with configuration If user select "TOUCH" TP will become touch panel without configuration
2	Reset to default	Click to clear all settings and load default.
3	Touch Function	Select "OFF" will turn off touch function. ● Note In multiple TP/Monitor system, Only one TP will be turned off.
4	Hide Mouse Cursor	Select "ON" will hide mouse cursor (Linux has no this item)
5	Mouse Function with AP	Configuration whether resident with software
6	Click Setting	There are 7 mouse emulation modes for ILITek touchscreen controllers. Click combo box to change the emulation mode. 1. Normal Behaves mouse button down and mouse move. User can select this

The information contained herein is the exclusive property of ILI Technology Corp. and shall not be distributed, reproduced, or disclosed in whole or in part without prior written permission of ILI Technology Corp.

mode to select object, and dragging the object.

2. Drag OFF

With this “Drag OFF” mode, the driver emulates a mouse release when the finger move or finger release.

3. Click on touch

With this “Click on touch” mode, the driver emulates a mouse click event when the touchscreen state was switched from un-touched state to touched state. Then, the driver always generate mouse move event and is tracking the touch position until the touchscreen state switched to un-touch state.

4. Click on touch without moving cursor

With this mode, the driver behaves similar as “Click on touch” mode. The cursor does not move to the touch position except the first touch point.

5. Click on release (needs fw support)

With this “Click on release” mode, the driver emulates a mouse click event when the touchscreen state was switched from touched state to un-touched state.

6. Click on release without moving cursor (needs fw support)

With this mode, the driver behaves similar as “Click on release” mode. The cursor does not move to the touch position except the lift-off point.

7. Desktop mode

With this mode, the driver behaves similar as “Normal” Mode. But the driver will not report mouse button down immediately after user touches down.

User needs to touch and stay at one point for a few milliseconds and then the driver will report mouse touch down.

The following slider is used to set time period.

Finger Option	Touch TP	Moving after touch	Leave TP
Normal	Press left button	Move cursor	Release left button
Drag Off	Press left button	Release left button	Release left button
Click on touch	Click left button	Move cursor	No action
Click on touch	Move cursor	No action	No action

		<div> <div>without moving cursor</div> <div>Click on release</div> <div>Click on release without moving cursor</div> <div>Desktop mode</div> </div> <div> <div>and click left button</div> <div>Move cursor</div> <div>No action</div> <div>Press left button (Need to wait)</div> </div> <div> <div></div> <div>Move cursor</div> <div>No action</div> <div>Move cursor</div> </div> <div> <div></div> <div>Click left button</div> <div>Move cursor and click left button</div> <div>Release left button</div> </div>
		<ul style="list-style-type: none"> Note <p>In multiple TP/Monitor system, Only one TP will be changed.</p>
7	Beep Sound	Beep sound on/off switch.
8	Beep Occasion	<p>User can select beep occasion</p> <p>Beep On Touch meaning driver generate beep when finger touch TP</p> <p>Beep On Release meaning driver generate beep when finger release TP</p>
9	Beep Frequency	Adjust the beep sound frequency, set range 500Hz~2000Hz
10	Beep Duration	Adjust the beep sound duration, set range 100ms~500ms
11	Beep Device Selection	<p>To select beep from buzzer or speaker (Linux has no this item)</p> <ul style="list-style-type: none"> Condition exclusion <p>(a) Beep from speaker needs iUniTouch tool is running.</p>

3.3 Touch Behavior

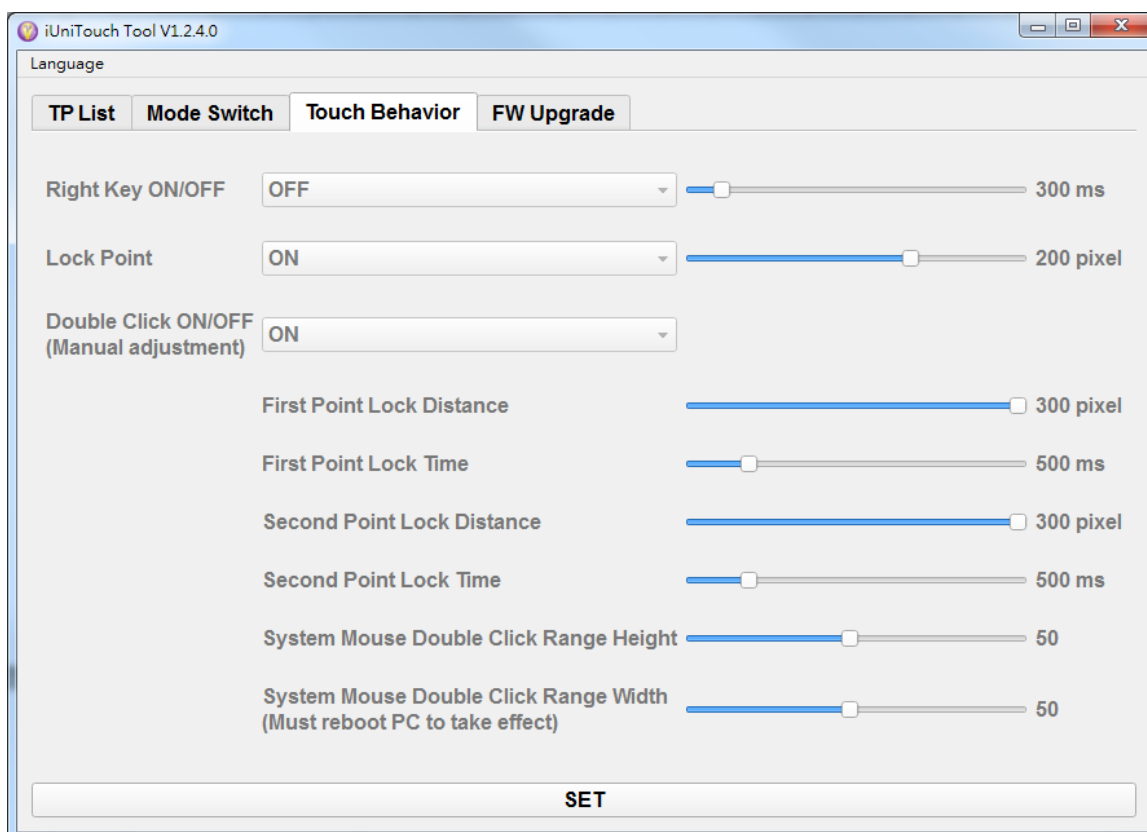


Figure 3-3: Touch Behavior

Table 3-3: Detailed description of Touch Behavior

No.	Item	Description
1	Right Key ON/OFF	If the touchscreen was kept touched for a specified time, the driver will generate a mouse right button click event if this function was enabled. The following slider used to adjust trigger time.
2	Double Click ON/OFF	Two continuous clicks at the same area within this specified time and area will be recognized as a double click event. When select "OFF" the following sliders used to adjust area and time to prevent OS recognized two continuous clicks as a double click event. <ul style="list-style-type: none">● Condition exclusion Due to "System Mouse Double Click Range" is setting of Windows, must reboot System to take effect. (Linux has no this item)
3	Lock Point	If Lock Point is "ON" , this is a criterion to judge if the most recent touched point is same as the previous touched point. If the points difference is within this area, it will be recognized as the same touch point and the driver does not generate new mouse event for this new touch point.

The information contained herein is the exclusive property of ILI Technology Corp. and shall not be distributed, reproduced, or disclosed in whole or in part without prior written permission of ILI Technology Corp.

3.4 FW Upgrade

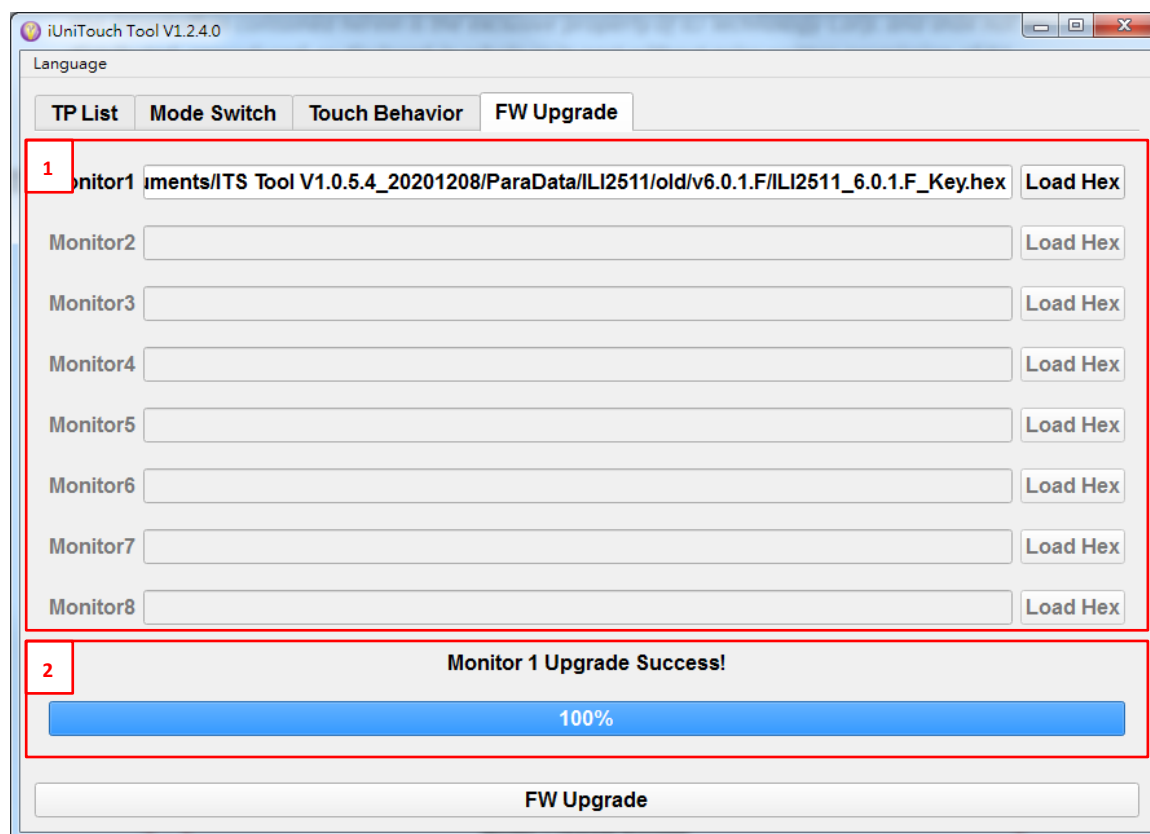


Figure 3-4: FW Upgrade

Table 3-4: Detail description of FW Upgrade

No.	Item	Description
1	Hex File Selection	User select hex for FW upgrade
2	Upgrade Progress	<p>Show FW upgrade progress during upgrade FW</p> <ul style="list-style-type: none"> Note <ol style="list-style-type: none"> After upgrade completed, have to reboot system or re-plug Device to make it effect. If you use other application to upgrade FW, Multi-monitor mapping will lose. You have to map again (reference to section 3.1)